

① Concept 3D View - Opening Scene

At the opening of Act 1, there are three wagons downstage, representing (left to right) the homes of Cinderella, Jack, and the Baker. These exit at the end of Scene 1. A luan tree profile is in front of the stage-right proscenium. Letters spelling out "Once Upon a Time" are hung in front of the proscenium at center. Behind the homes are a raised platform faced to look like rock, with a ramp at center and steps disguised to look like rocks, and large ruin on the platform upstage left. Rapunzel's tower is downstage left. The Mother's Tree is midstage right (behind Cinderella's house). Additional luan tree profiles are hung in front of legs and teasers. Additional trees are arranged along the walls of the audience seating area.

Director: Teri Grimes

Into the Woods

Concept 3D View

Designed by

David Cohn

1

Date

4/21/22

Scale



1 Concept 3D View - Other Scenes

With the homes removed, the "woods" are in full view. We see a raised platform faced to look like rock, with a ramp at center and steps disguised to look like rocks, and large ruin on the platform upstage left. Rapunzel's tower is downstage left and a fallen log is midstage left. The Mother's Tree is midstage right and a tree stump is downstage right. Other trees are scattered around the stage and on the raised platform. Additional luan tree profiles are hung in front of legs and teasers. Additional trees are arranged along the walls of the audience seating area.

Director: Teri Grimes

Into the Woods

Concept 3D View

Designed by

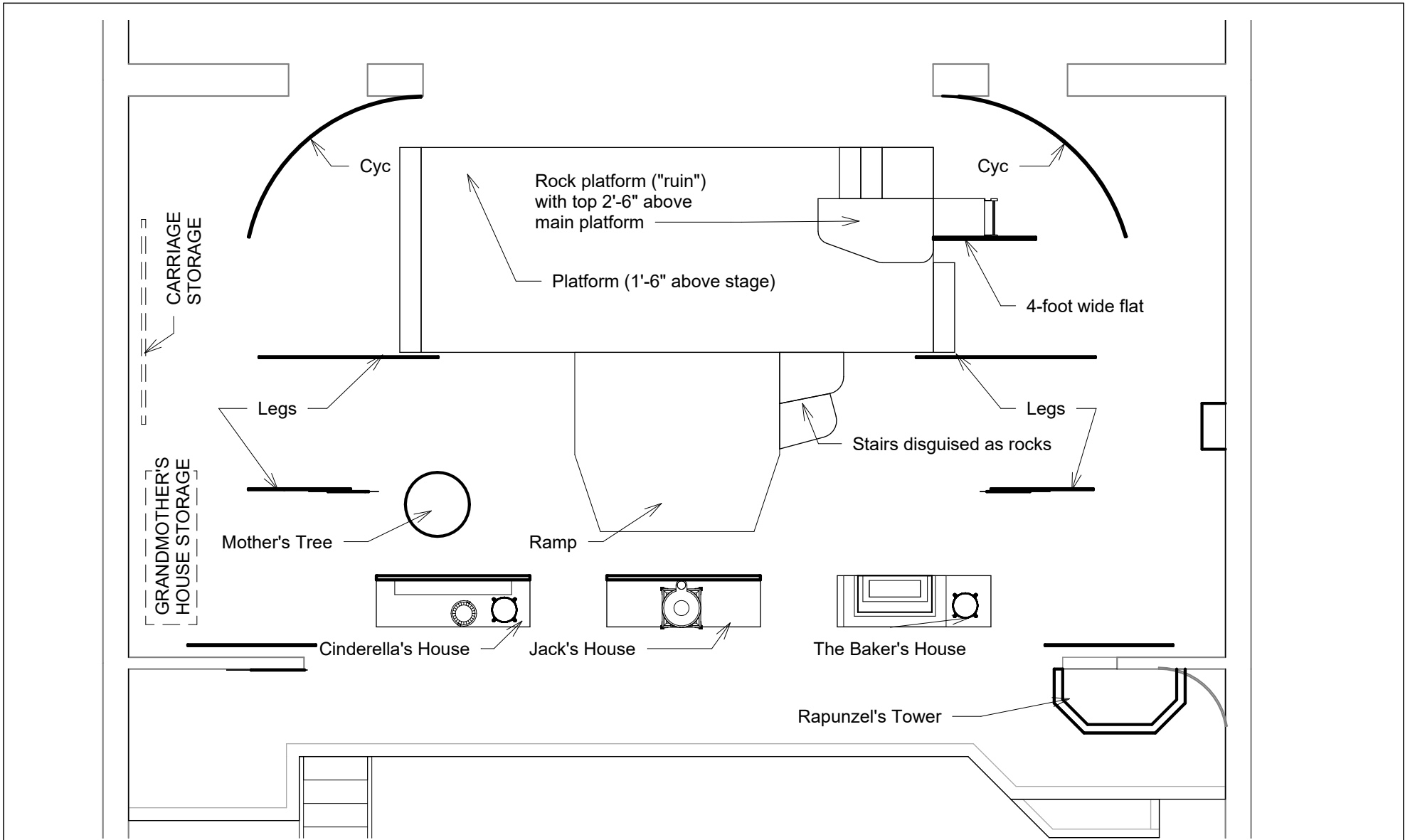
David Cohn

2

Date

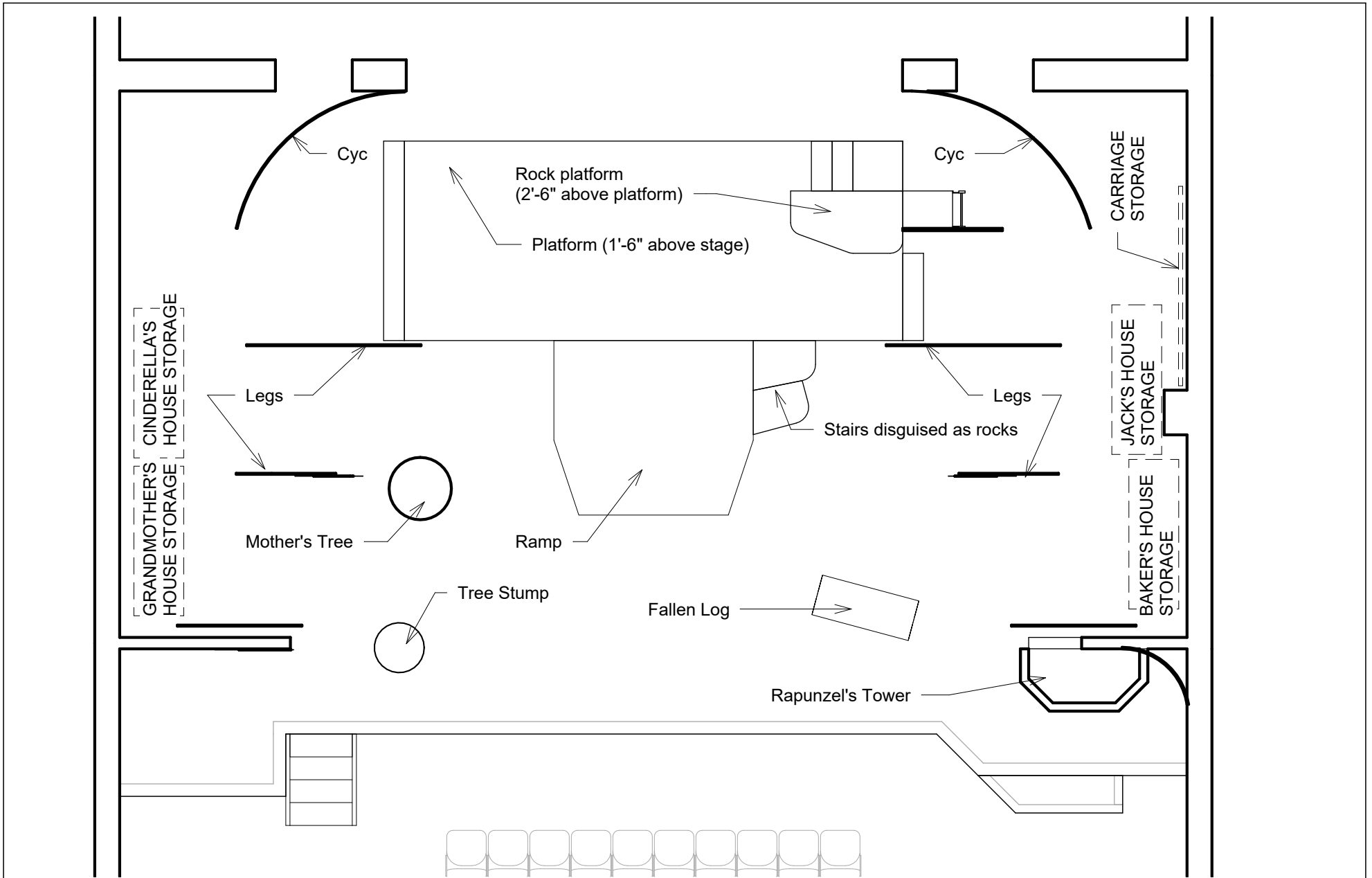
4/21/22

Scale



1 Floor Plan - Opening Scene  
 3/16" = 1'-0"

Director: Teri Grimes		Opening Scene	
Into the Woods		Designed by David Cohn	3
Date	4/21/22	Scale 3/16" = 1'-0"	



1 Floor Plan - Other Scenes  
 3/16" = 1'-0"

Director: Teri Grimes

Into the Woods

## Other Scenes

Designed by

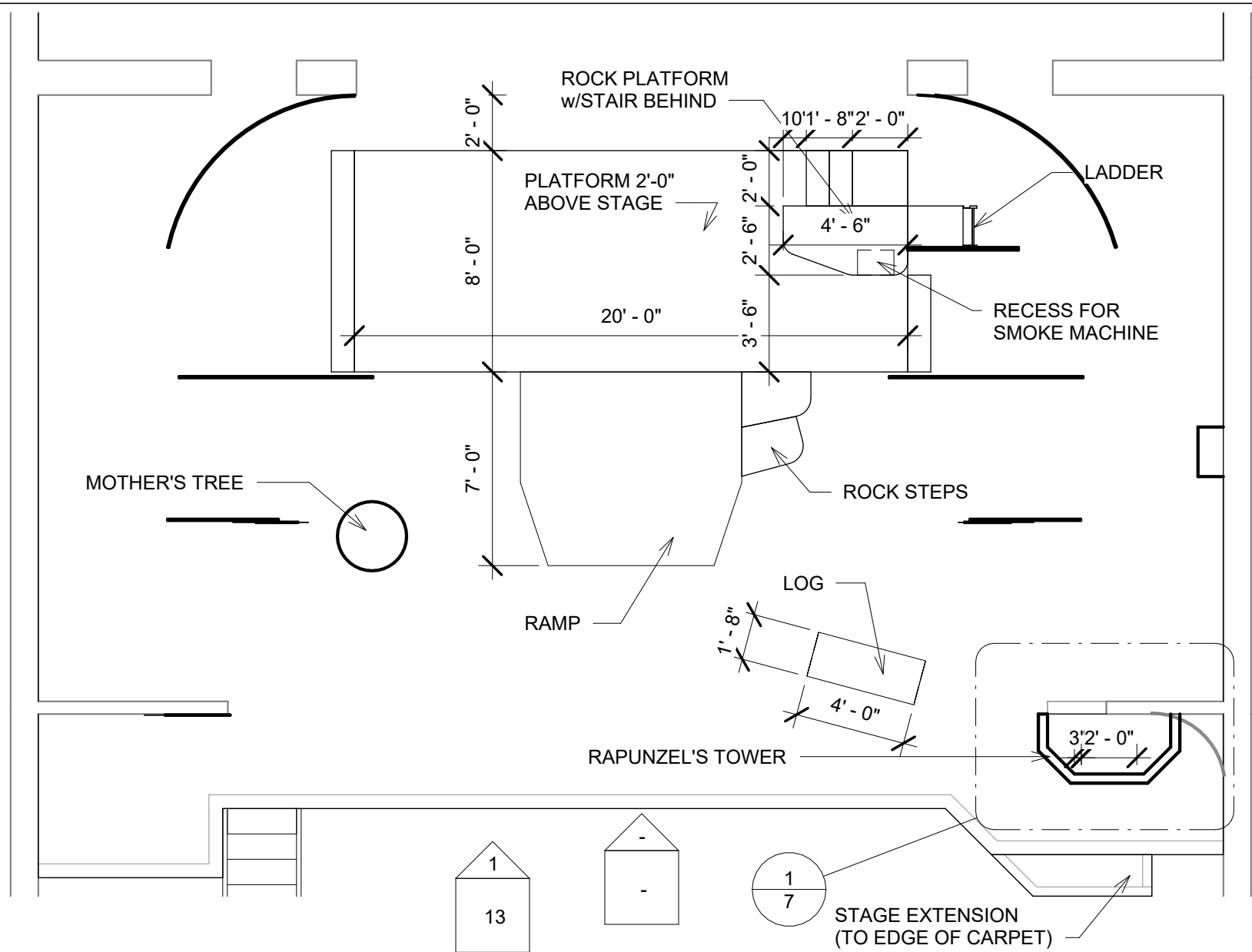
David Cohn

4

Date

4/21/22

Scale 3/16" = 1'-0"



① Dimensioned Layout Plan  
 3/16" = 1'-0"

Director: Teri Grimes

# Layout Plan

Into the Woods

Designed by

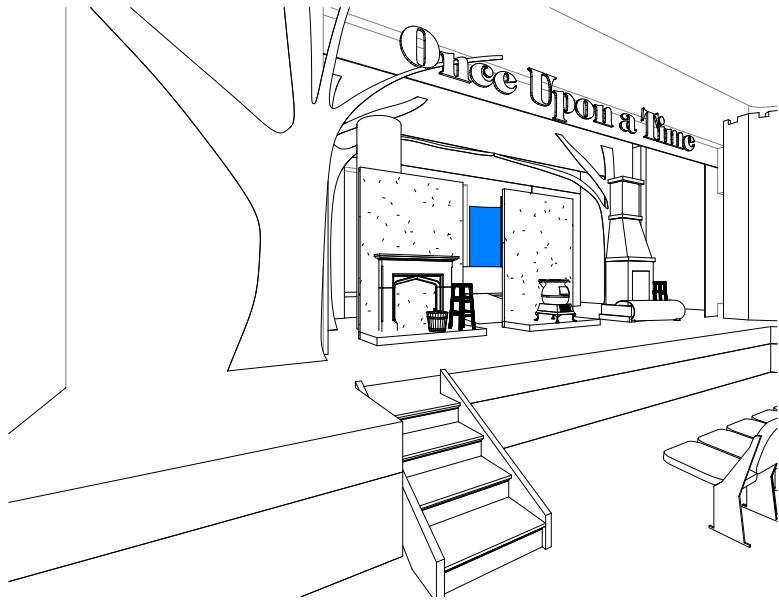
David Cohn

5

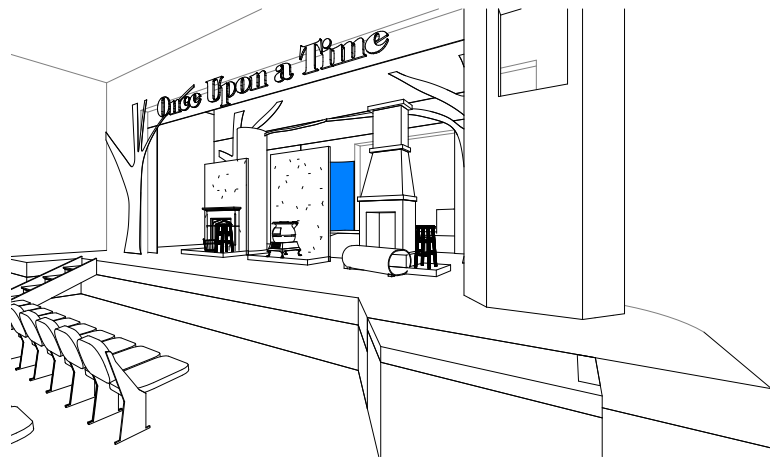
Date

4/21/22

Scale 3/16" = 1'-0"

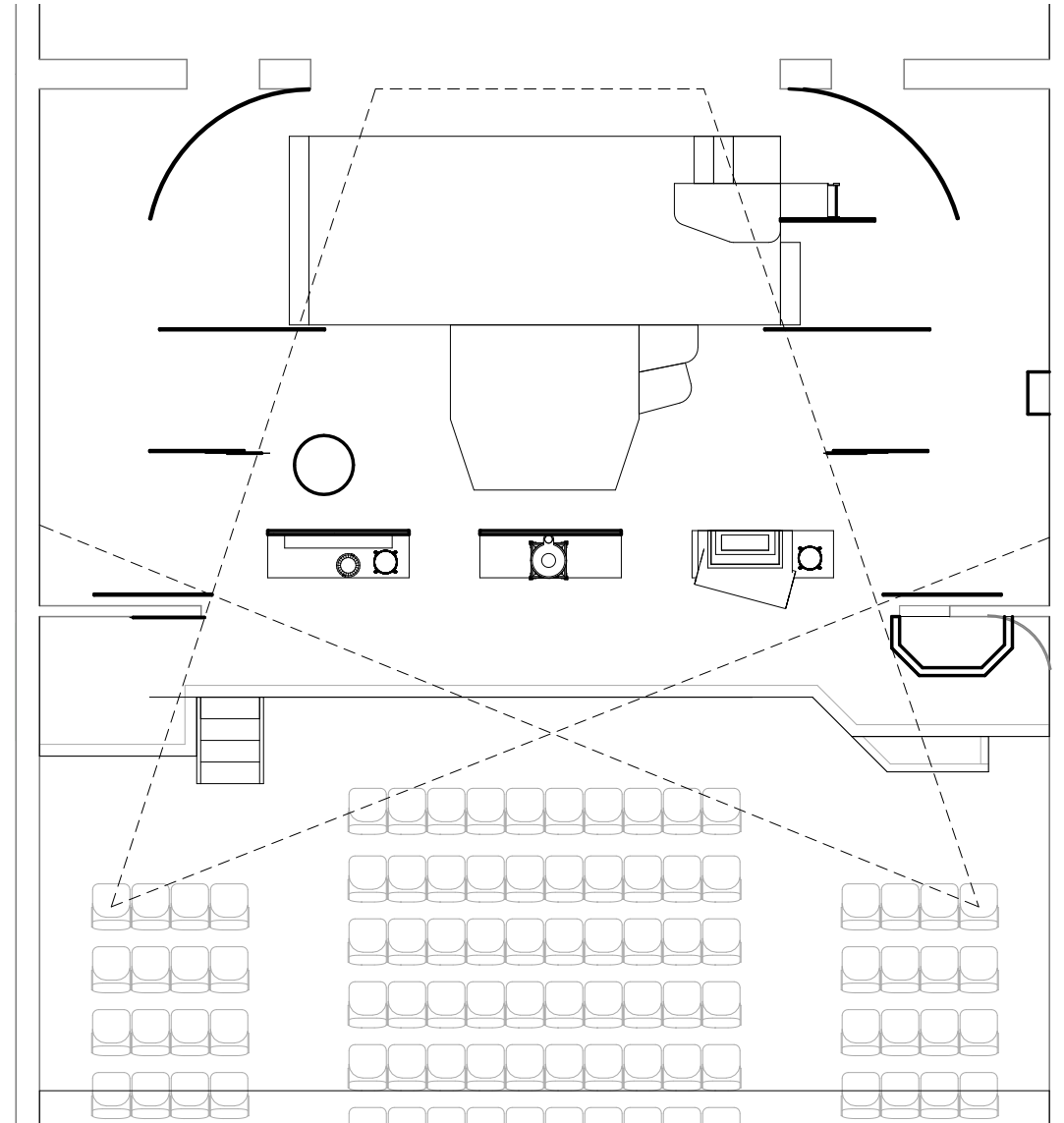


2 View from Extreme Left of House



3 View from Extreme Right of House

NOTE: Now that an opening has been created to access Rapunzel's Tower, there are no "Obstructed View Seats."



1 Plan with Sight Lines  
1/8" = 1'-0"

Director: Teri Grimes

## Sight Lines

Designed by

David Cohn

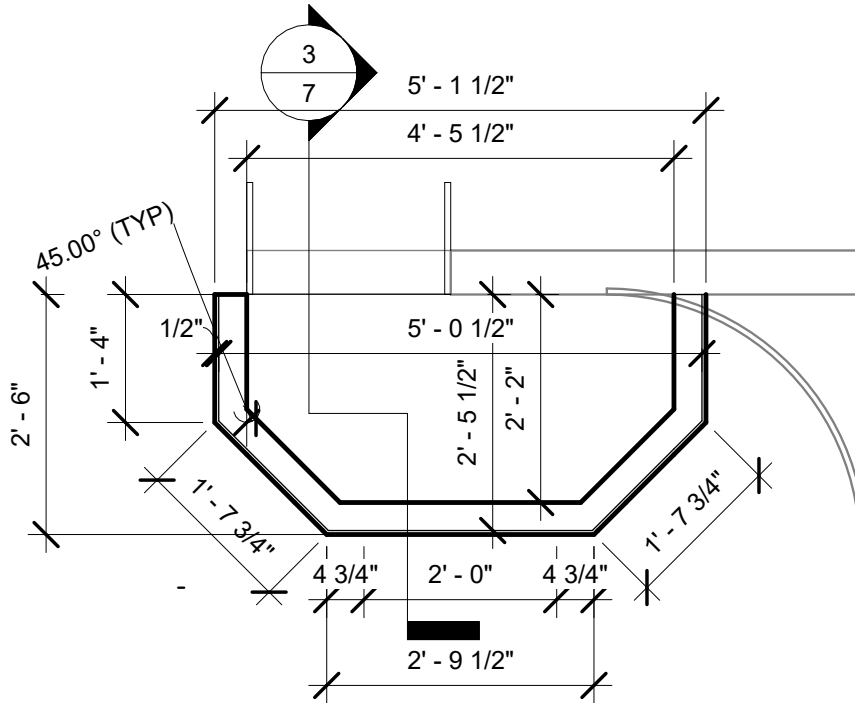
6

Date

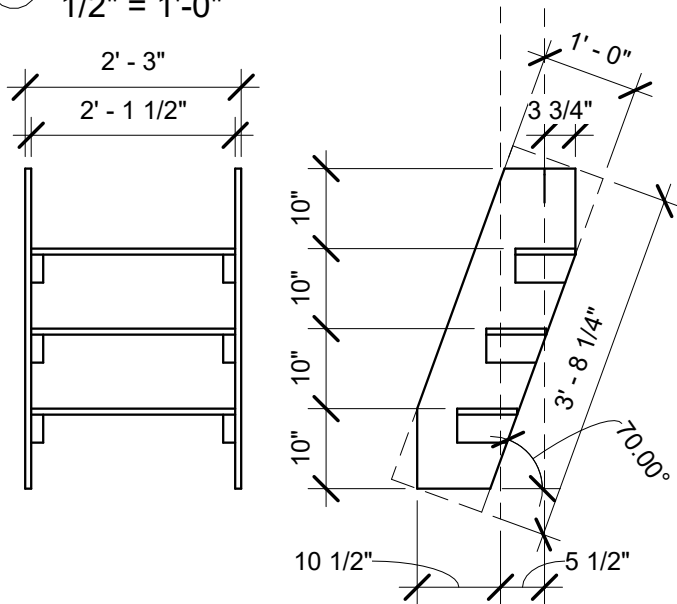
4/21/22

Scale 1/8" = 1'-0"

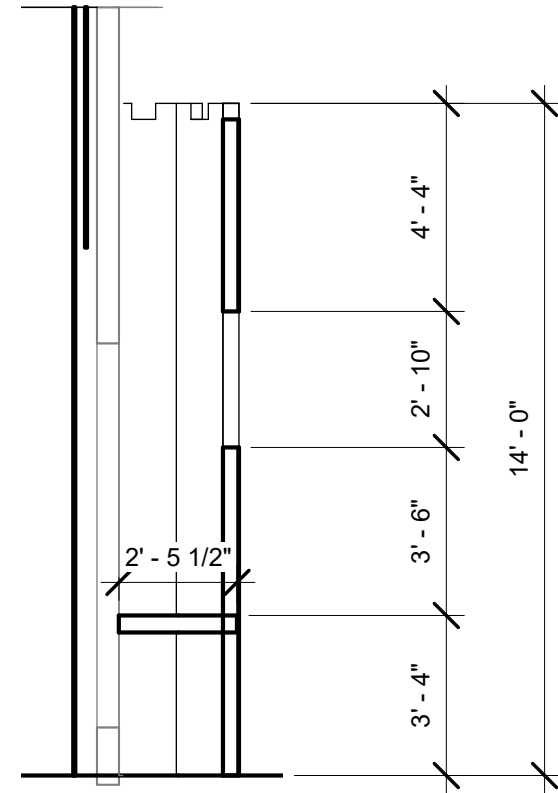
Into the Woods



1 Plan at Rapunzel's Tower  
1/2" = 1'-0"



2 Rapunzel's Ship Ladder  
1/2" = 1'-0"



3 Section 1  
1/4" = 1'-0"

Director: Teri Grimes

# Rapunzel's Tower

Designed by

David Cohn

7

Into the Woods

Date

4/21/22

Scale As indicated

FOLIAGE PAINTED ON LUAN  
(REMOVED FOR ACT 2)

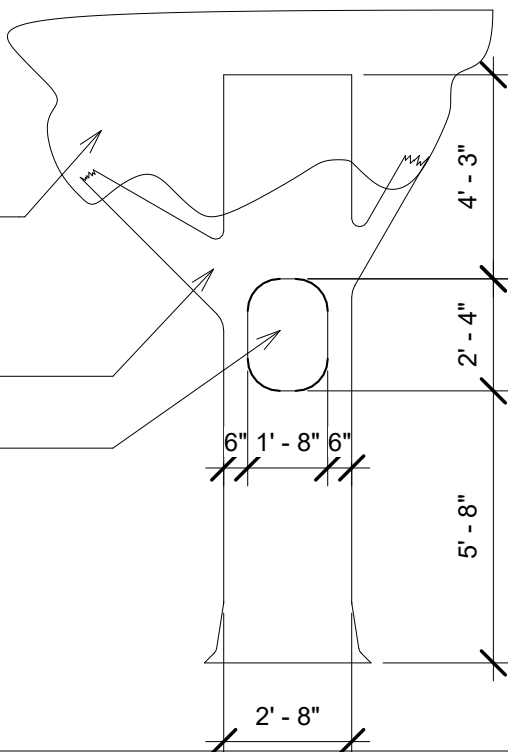
TEXTURE AND PAINT  
TO LOOK LIKE A TREE

OPENING FOR MOTHER

MOTHER'S TREE TO BE CONSTRUCTED  
USING 1X4 ARMATURE COVERED WITH  
CHICKENWIRE AND MUSLIN, TEXTURED  
AND PAINTED TO LOOK LIKE A TREE

STAGE BOX INSIDE TREE

1 MOTHER'S TREE  
1/4" = 1'-0"



Director: Teri Grimes

Mother's Tree

Into the Woods

Designed by

David Cohn

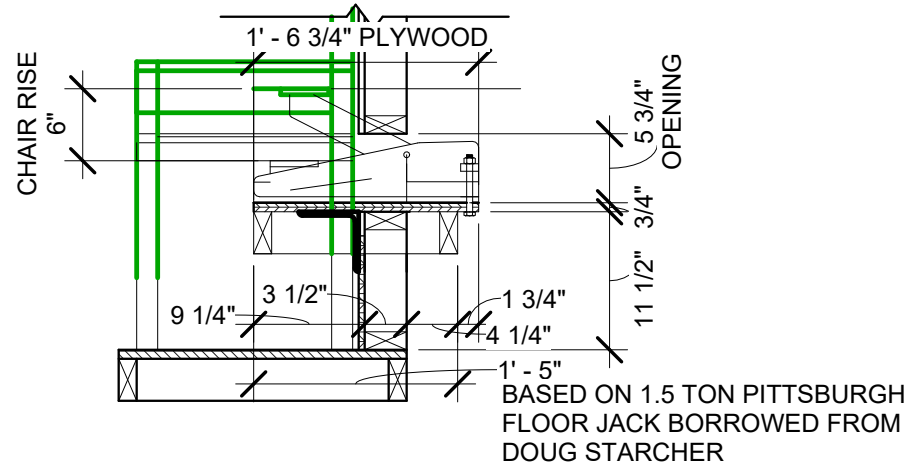
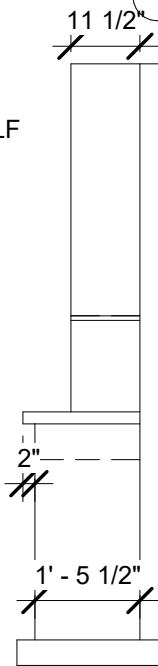
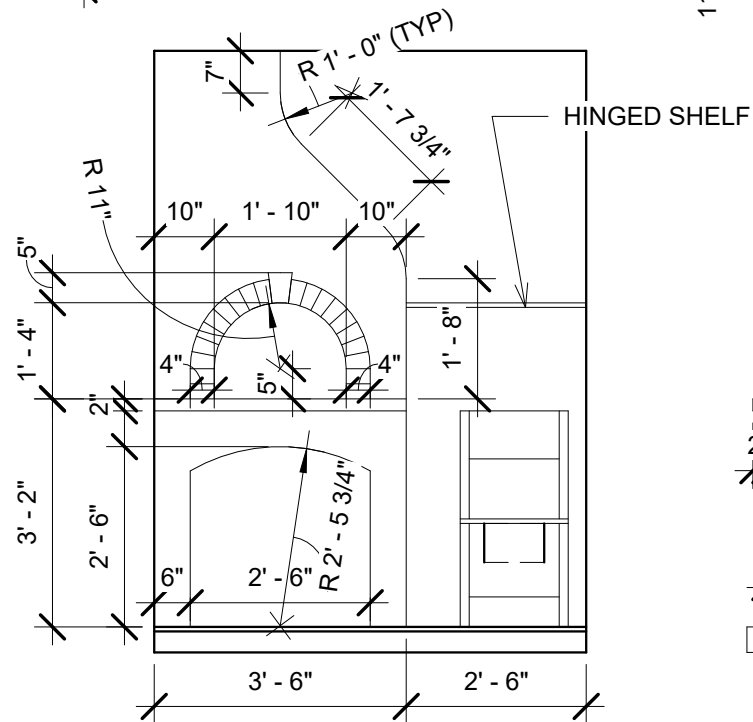
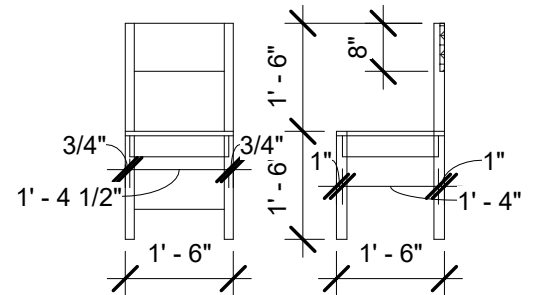
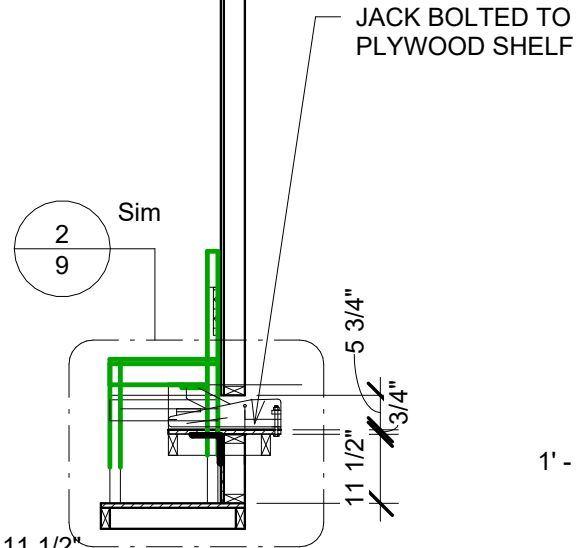
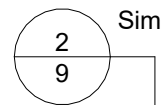
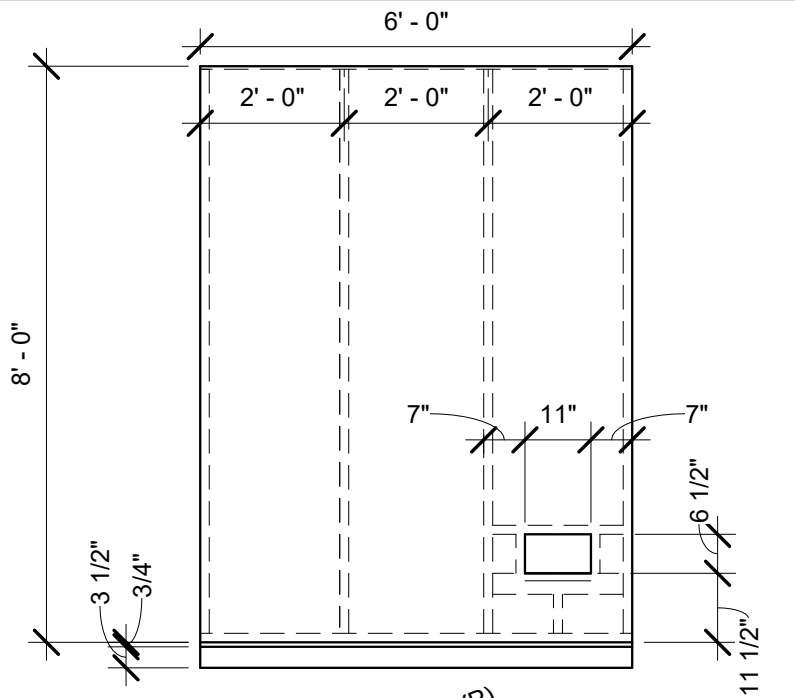
8

Date

4/21/22

Scale 1/4" = 1'-0"





BASED ON 1.5 TON PITTSBURGH FLOOR JACK BORROWED FROM DOUG STARCHER

2 Jack Detail  
3/4" = 1'-0"

1 Baker's House  
3/8" = 1'-0"

Director: Teri Grimes

# Baker's House

Designed by

David Cohn

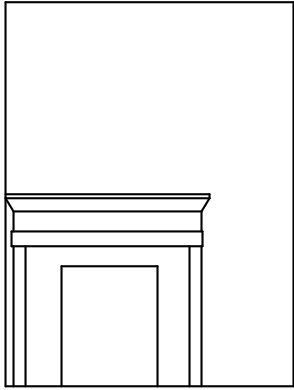
9

Into the Woods

Date

4/21/22

Scale As indicated



① Cinderella's House  
1/4" = 1'-0"

Director: Teri Grimes

Into the Woods

## Other Houses

Designed by

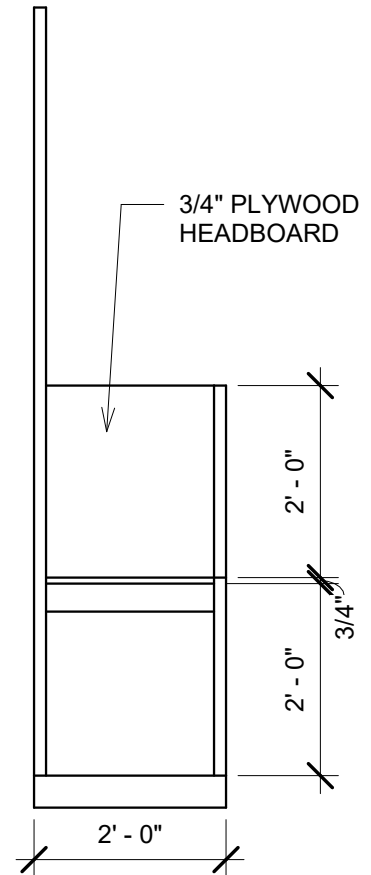
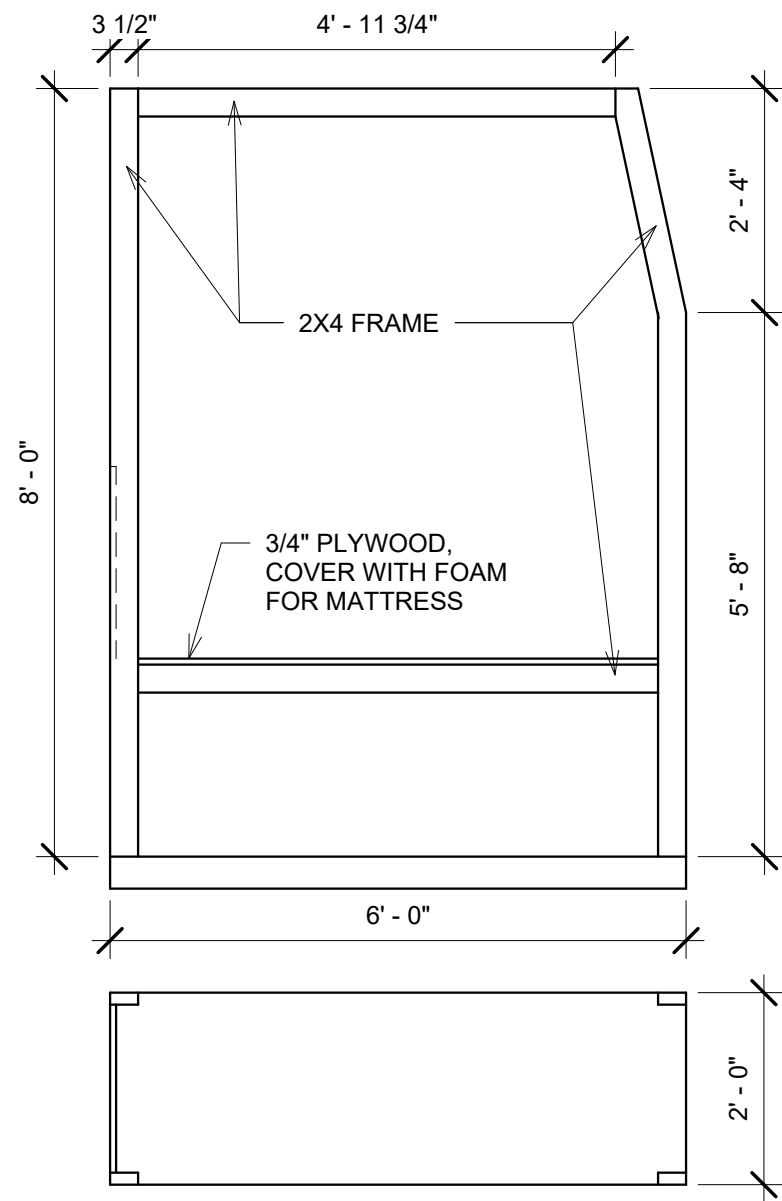
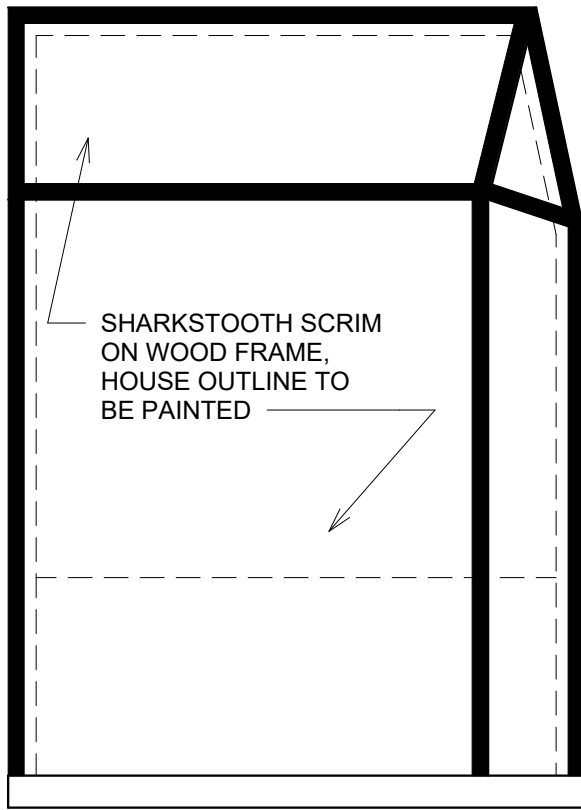
David Cohn

10

Date

4/21/22

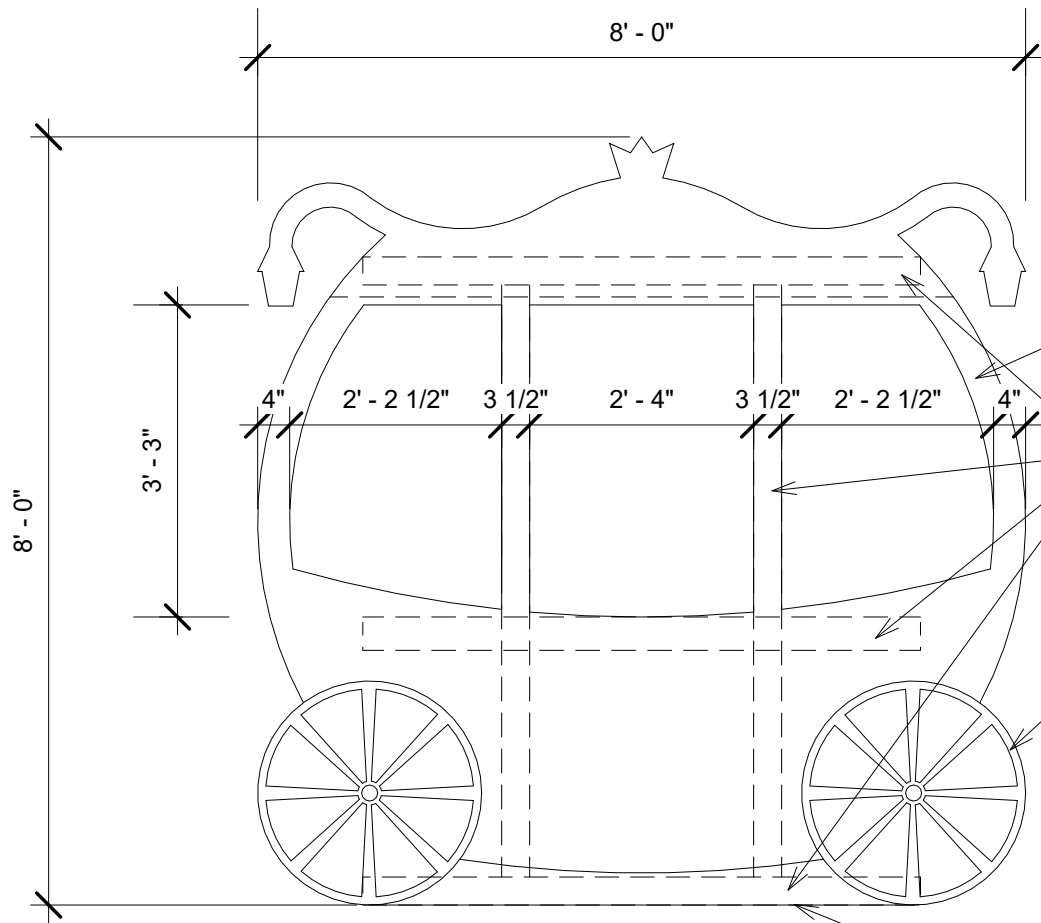
Scale 1/4" = 1'-0"



1 GRANDMOTHER'S BED  
1/2" = 1'-0"

Director: Teri Grimes  
Into the Woods

<b>Grandmother's Bed</b>	
Designed by David Cohn	<b>11</b>
Date 4/21/22	Scale 1/2" = 1'-0"



CARRIAGE TO BE BUILT AS A FLAT CUTOUT THAT CAN BE CARRIED BY THE ACTORS SO THAT IT APPEARS THAT THEY ARE INSIDE.

1/8" LUAN

1X4 LUMBER SUPPORT FRAME

WHEELS ARE PAINTED

CARPET OR GLIDE/SLIDE ON BOTTOM

① CARRIAGE  
1/2" = 1'-0"

Director: Teri Grimes

Carriage

Designed by

David Cohn

12

Into the Woods

Date

4/21/22

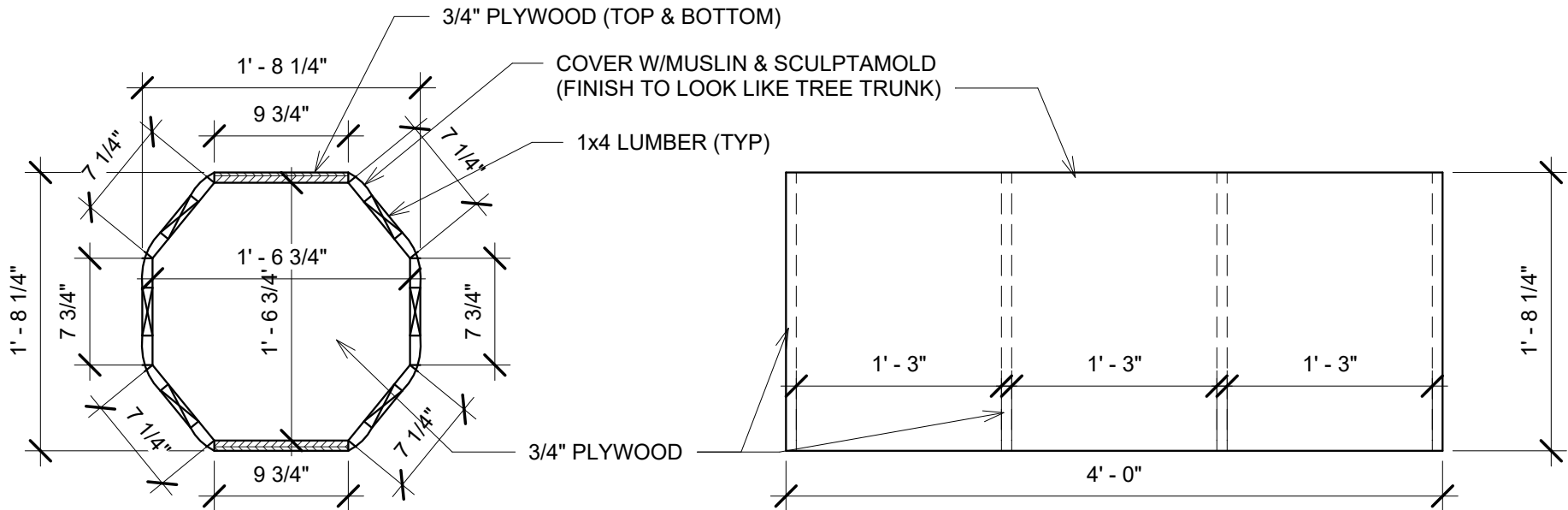
Scale 1/2" = 1'-0"

22' - 1 1/2"

# Once Upon a Time

FONT SHOULD BE TrueType TYMPANI HEAVY

## 1 ONCE UPON A TIME SIGN 1/4" = 1'-0"



## 2 FALLEN LOG 1" = 1'-0"

Director: Teri Grimes

### Sign and Log

Into the Woods

Designed by

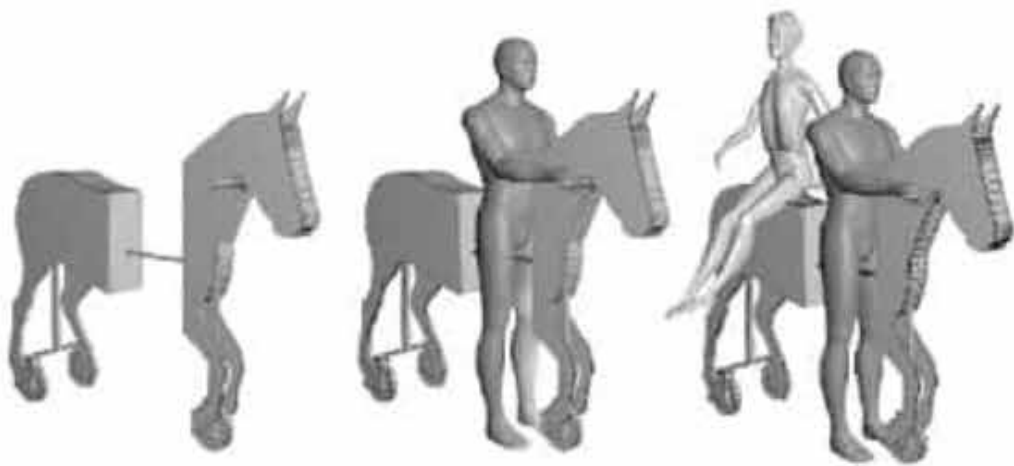
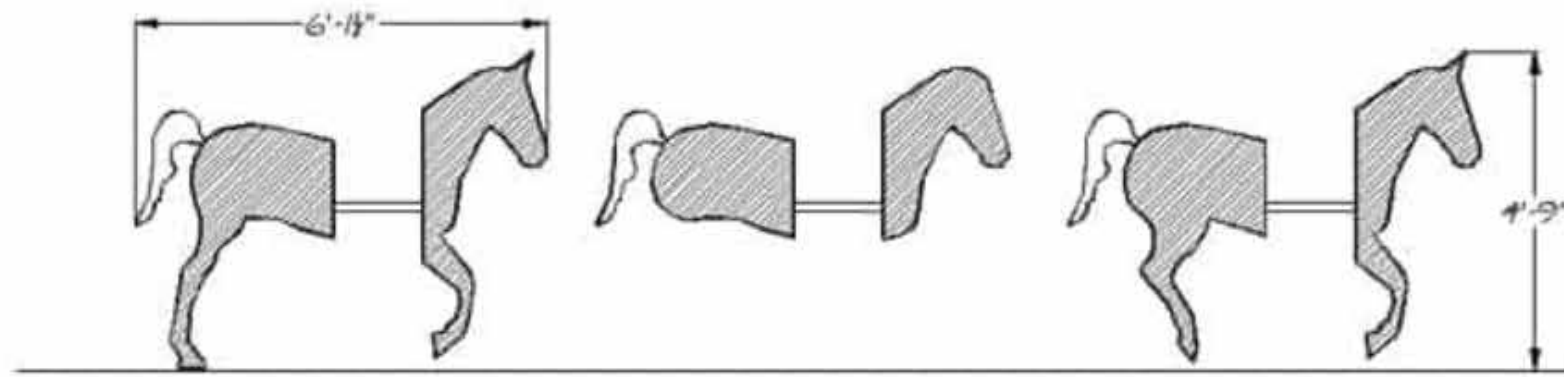
David Cohn

# 13

Date

4/21/22

Scale As indicated



*HORSE  
 THE HORSE IS PUSHED BY CINDERELLA'S  
 PRINCE AS HE STANDS OVER IT.  
 CINDERELLA AND THE STEP SISTERS ARE  
 EACH SET ON THE HORSE'S RUMP,  
 SIDESADDLE, AS PASSENGERS (ONE AT A  
 TIME). LARGE STRAIGHT CASTERS ARE  
 PREFERRED FOR THIS.*

Director: Teri Grimes		Prince's Horse	
Into the Woods		Designed by David Cohn	14
Date	4/21/22	Scale	