



① 3D View 1

Director: Teri Grimes

3D View

Designed by

David Cohn

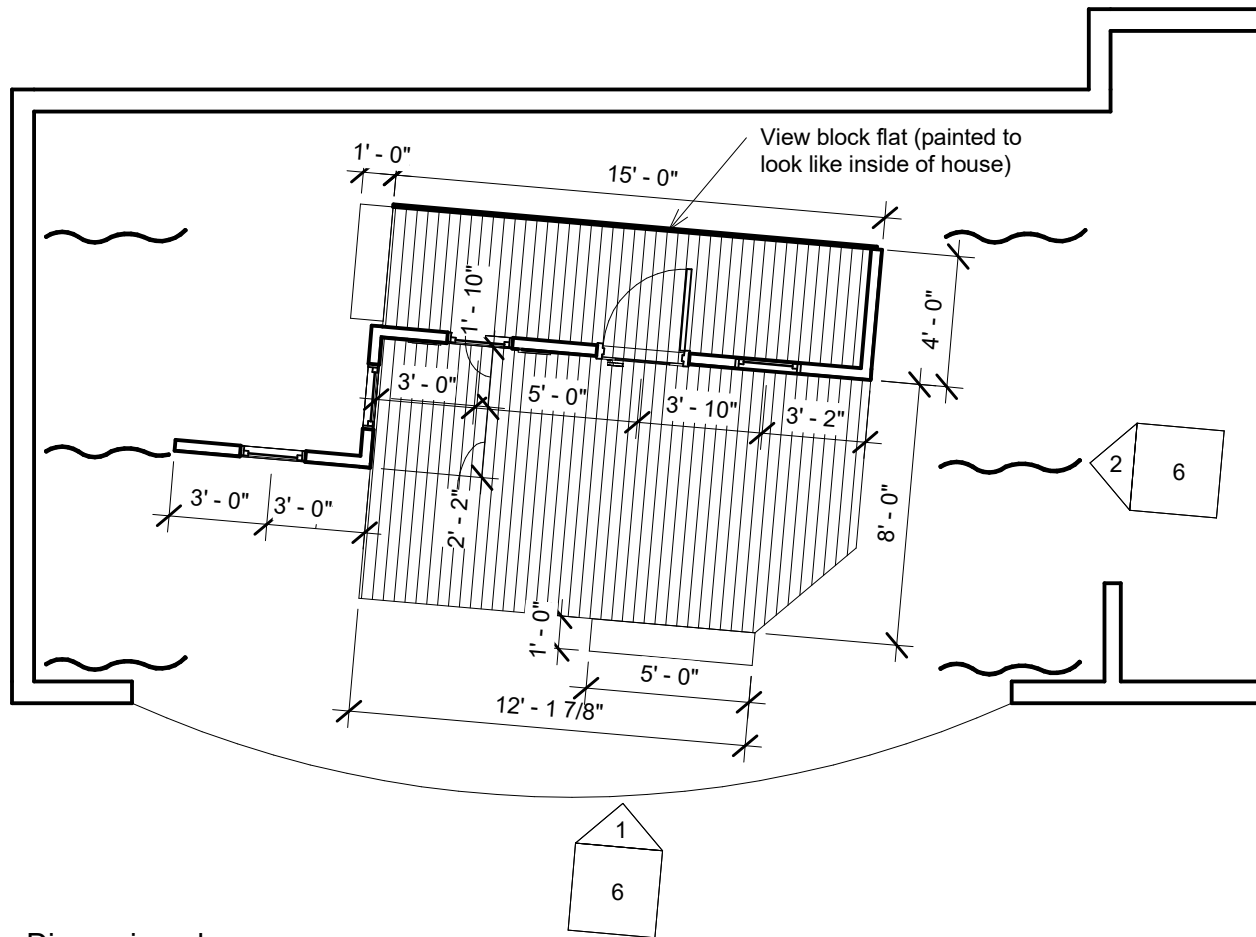
1

Claire V: Proof

Date

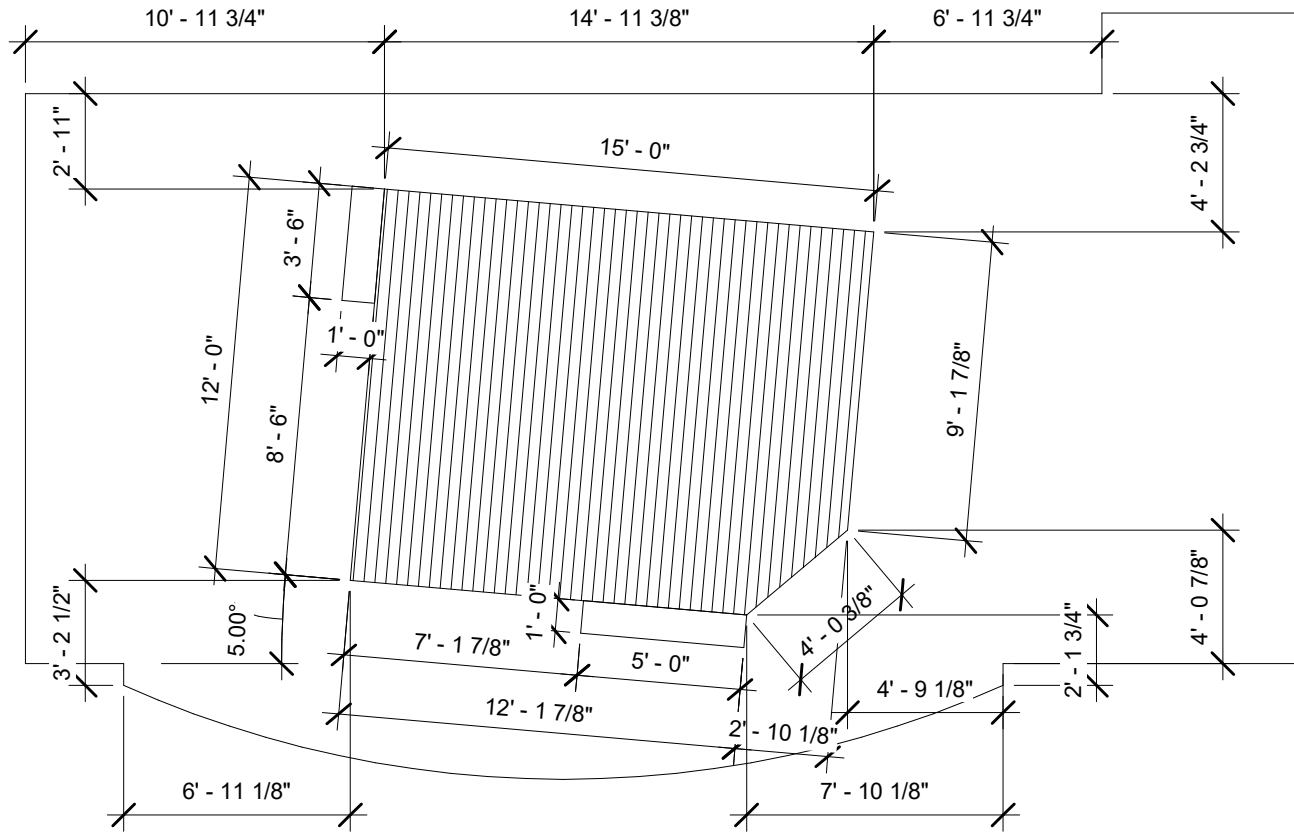
8/8/21

Scale



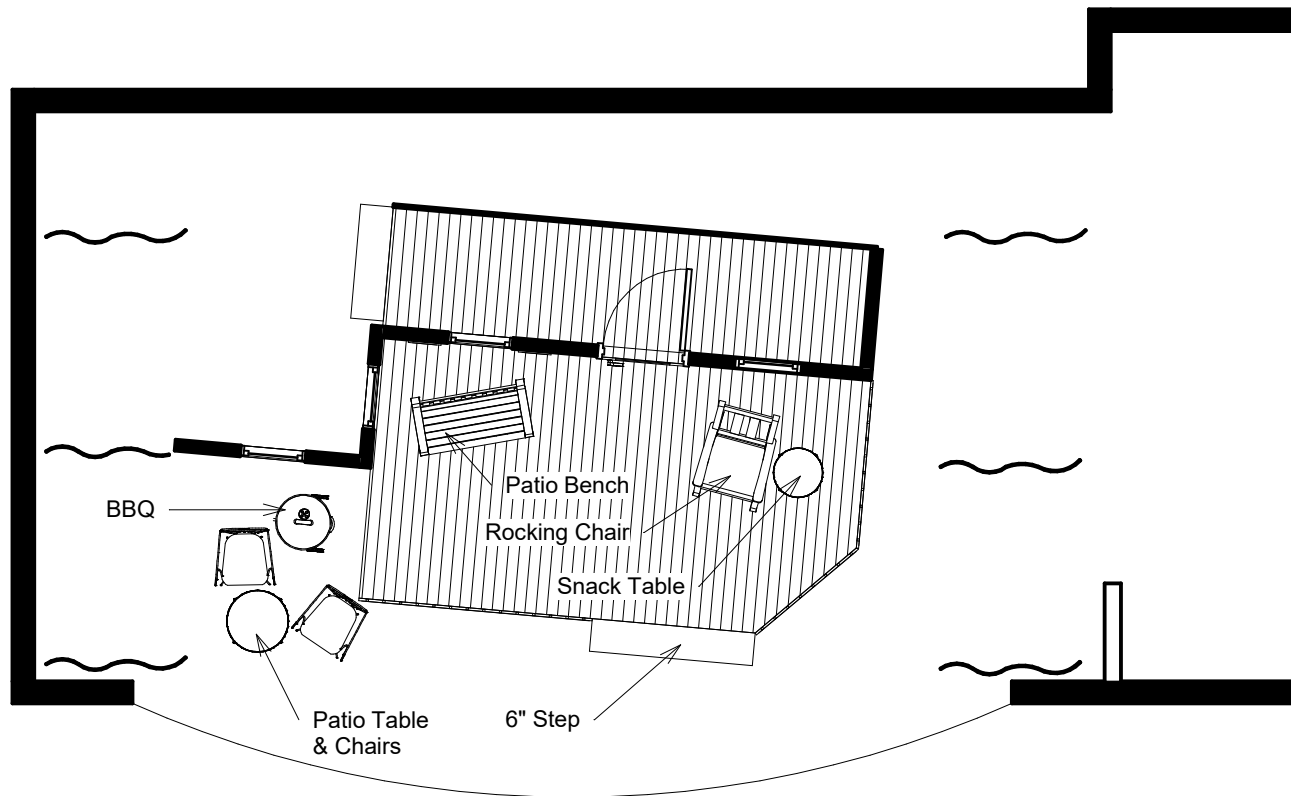
① Set - Dimensioned  
 3/16" = 1'-0"

Director: Teri Grimes		<b>Floor Plan</b>	
Claire V: Proof		Designed by David Cohn	<b>2</b>
Date	8/8/21	Scale 3/16" = 1'-0"	



① Set - Platform  
 3/16" = 1'-0"

Director: Teri Grimes		<b>Platform</b>	
Claire V: Proof		Designed by David Cohn	<b>3</b>
Date	8/8/21	Scale 3/16" = 1'-0"	



① Set - Furniture  
 3/16" = 1'-0"

Director: Teri Grimes

## Furniture

Designed by

David Cohn

4

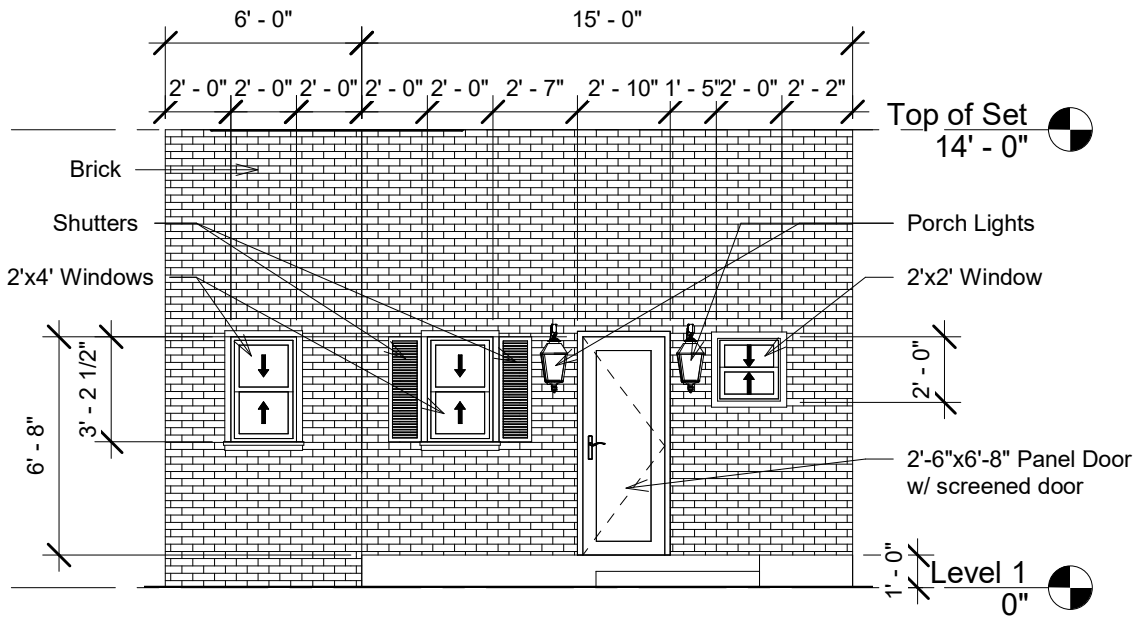
Date

8/8/21

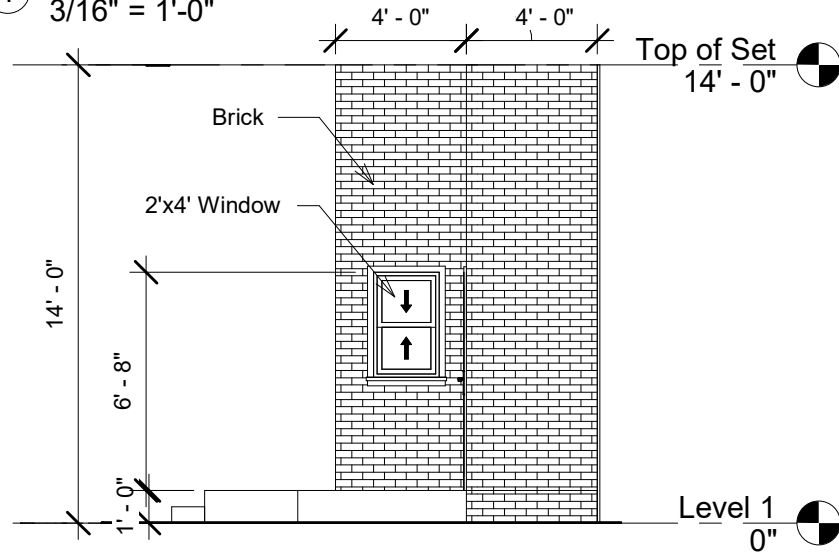
Scale 3/16" = 1'-0"

8/21/2021 7:56:06 PM

Claire V: Proof



① Elevation 1 - a  
3/16" = 1'-0"



② Elevation 2 - a  
3/16" = 1'-0"

Notes:

1. Exterior walls of house are brick (painted or imitation brick material).
2. Window sizes are approximate. Should look like double-hung windows (circa 1920's). White curtains on inside prevent any view into the interior of the house.
3. Door can be 6-panel or upper-glass, hinged to swing in. There is also a screen door that swings out. (If door has upper glass, then white curtains will be needed to prevent any view into the interior of the house.)
4. Face of raised platform painted flat black and then covered with lattice.

Director: Teri Grimes

Claire V: Proof

## Wall Elevations

Designed by

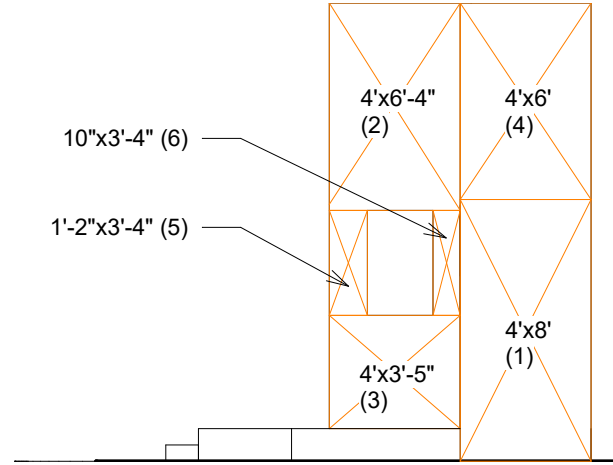
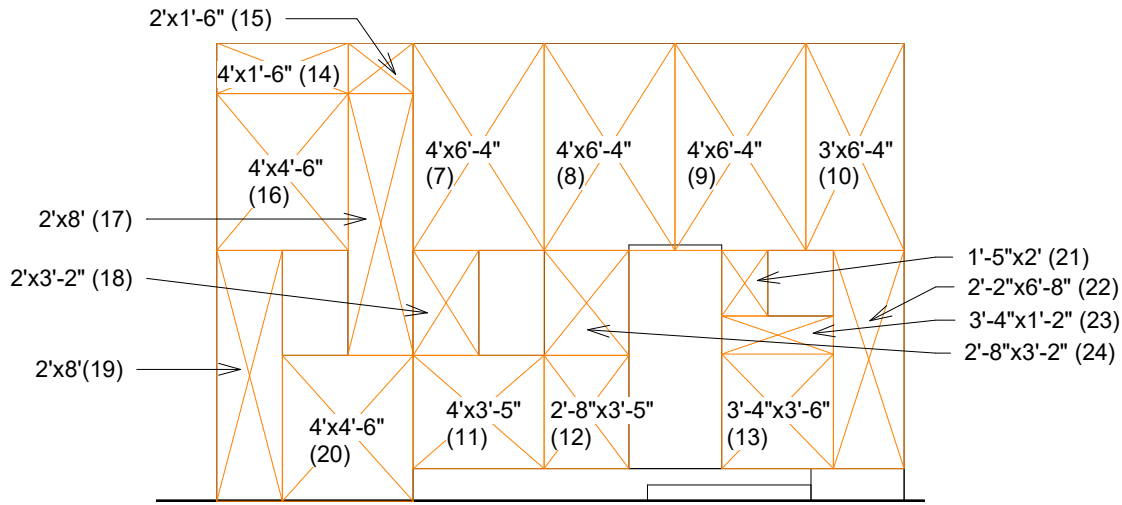
David Cohn

5

Date

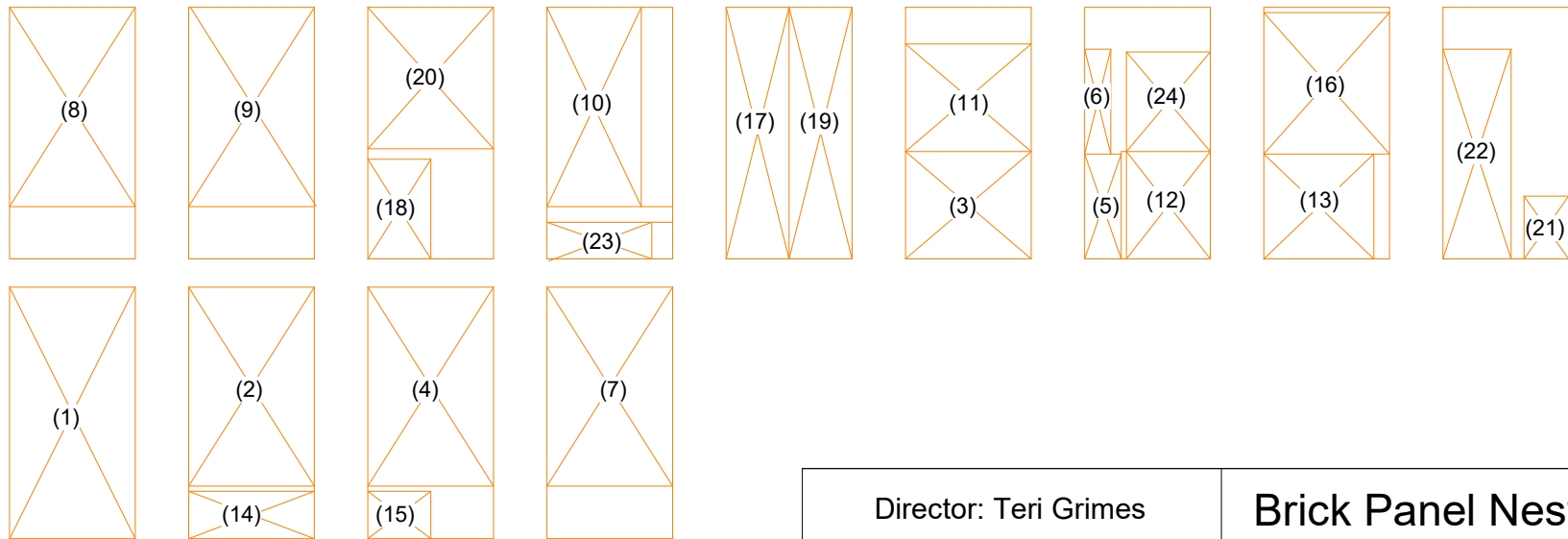
8/8/21

Scale 3/16" = 1'-0"



① Elevation 1 - Brick  
3/16" = 1'-0"

② Elevation 2 - Brick  
3/16" = 1'-0"



③ Brick Panel Nesting  
3/16" = 1'-0"

Director: Teri Grimes

## Brick Panel Nesting

Designed by

David Cohn

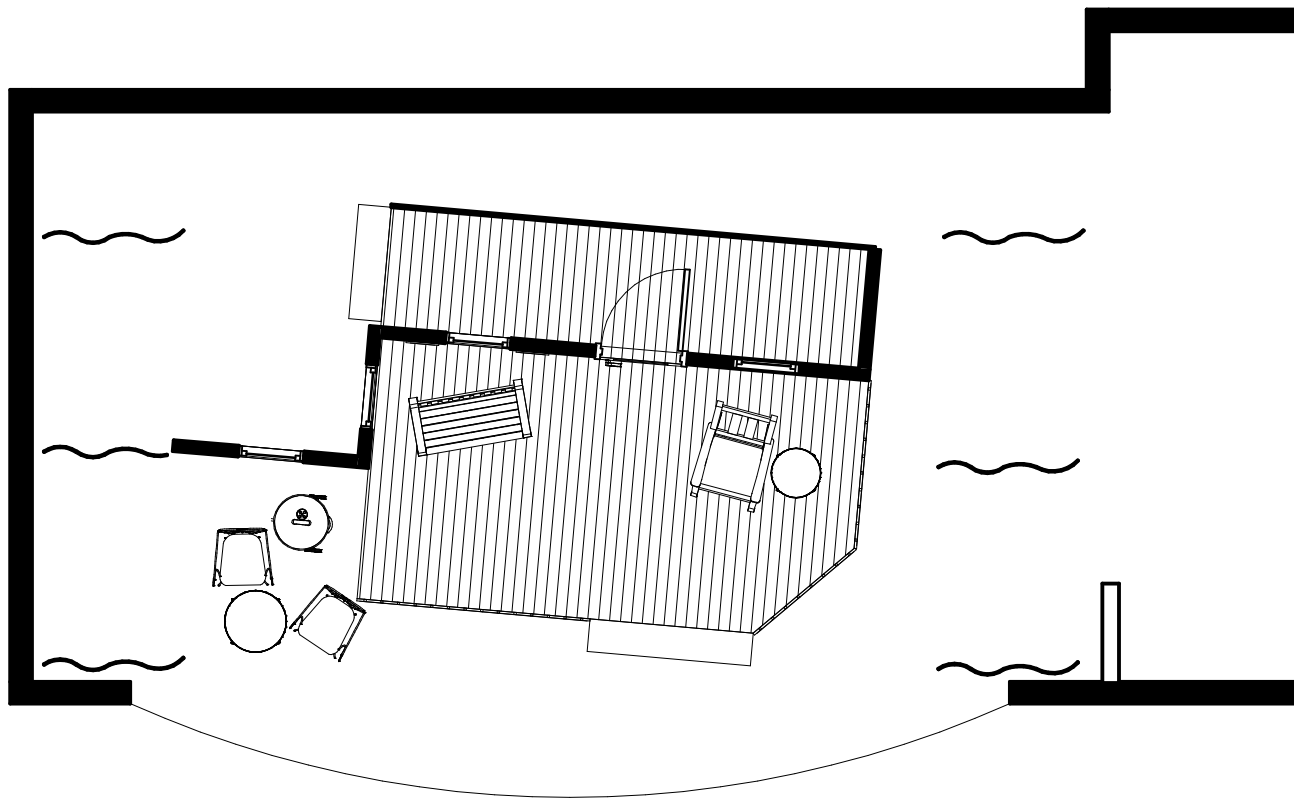
6

Claire V: Proof

Date

8/8/21

Scale 3/16" = 1'-0"



① Set - Blocking  
 3/16" = 1'-0"

Director: Teri Grimes

Claire V: Proof

## Blocking Plan

Designed by

David Cohn

7

Date

8/8/21

Scale 3/16" = 1'-0"

8/21/2021 7:56:07 PM